

Katie Isles



Karndean
Designflooring





Hi, I am Katie, presenter and model from @katieisles and @twoblondebrummies.

We moved into our home back in October 2018 after spending the previous five years renovating and restoring our former home. As a result of this, we were not looking for another big project.

Although our current house didn't need a great deal of work doing to it, we realised after living in it for a couple of weeks that it wasn't really 'us', so we set about decorating pretty much every, single room.

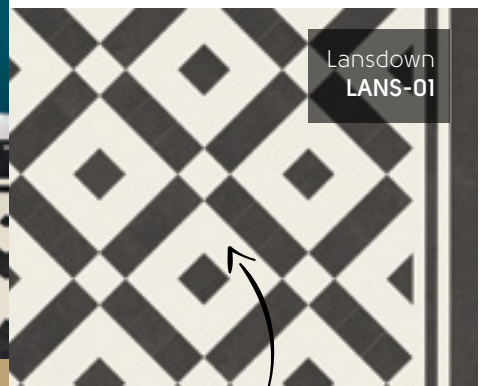
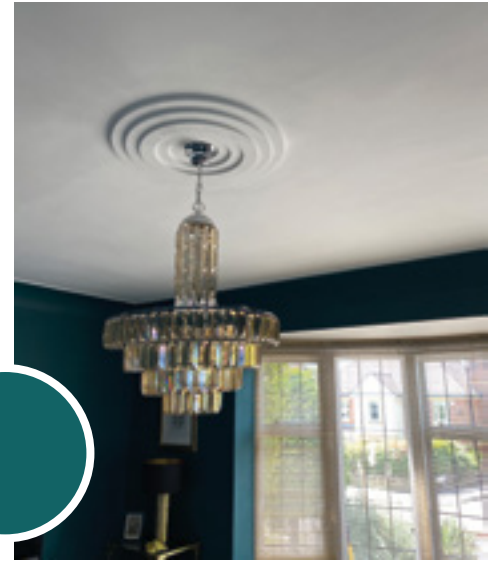
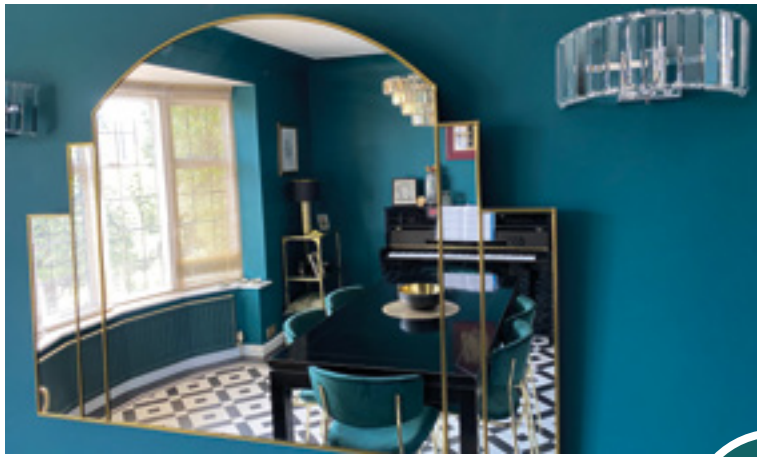
The dining room was one of the first rooms that we tackled as we wanted to improve the bland space. I knew that I wanted a bold green wall colour, but not much else. We already had the black table, chandelier, drinks trolley and shelf unit so we decided to work from those. My husband loves art deco and 20s styling, so we decided to make this room 'the glam room.' There's contrasting bling and gold accessories around the room, and I fell in love with the velvet and gold chairs as they made a massive impact to the space.

We wanted this room to have the 'wow' factor and it is completely different to the rest of the house and to our usual style of simple pastels and neutrals. I really wanted to open the door and be transported to a different place.

The floor was the final piece of the puzzle, but it truly made a statement. We went to our usual flooring supplier with our black and white, bold brief and they pointed us in the direction of the Heritage Collection. We decided to go with the Lansdown design along with the border as we felt that it would add to the period styling, we were looking to create.

We already had Karndean fitted throughout the whole of our the downstairs in our previous home, so we knew that it was going to be an investment that would continue to look good for years to come, even with family life and a pet dog.

Meet the home designer



"We wanted this room to have the 'wow factor' and it is completely different to the rest of the house and to our usual style of simple pastels and neutrals." shares Katie.

In a classic monochrome combination, Lansdown presents a clean and contemporary grid effect with square tiles in Nero and Lace.

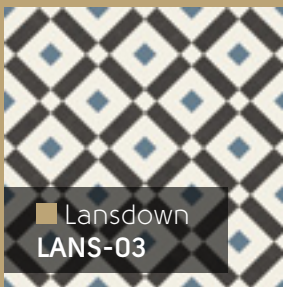
Feeling inspired?

Katie recommends

If you're looking to create a similar style, here are the five products our home designer recommends for you. Why not order free chip samples to get your moodboard started at home?



■ Lansdown LANS-01



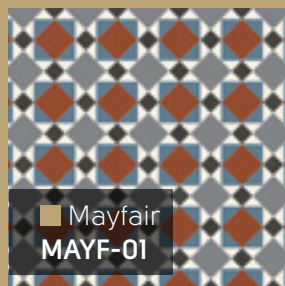
■ Lansdown LANS-03



■ Clifton CLIF-01



■ Montpellier MONT-01



■ Mayfair MAYF-01

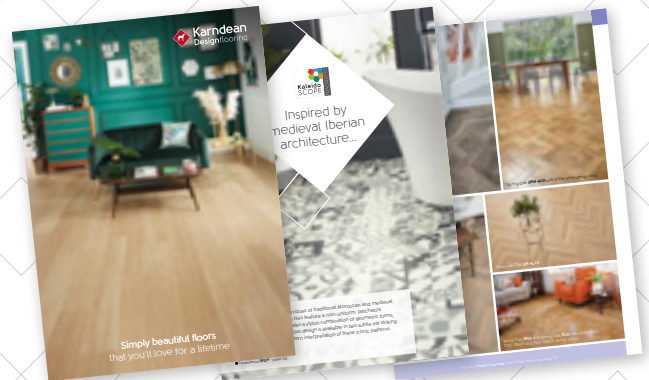
Follow us on instagram

 @karndean_uk

Our brochure

With our complete range of wood, stone and abstract designs on display, you'll be sure to find a simply beautiful floor you'll love for a lifetime.

karndean.com/consumerbrochure



Floorstyle

Our Floorstyle design tool can help you see your next floor in your own home. Simply, upload your own photograph or use your camera on your own device. Why not explore alternative laying patterns at the same time?

karndean.com/floorstyle

